



dock marine
europe



DRIVE-ON DOCK : BOAT LIFT

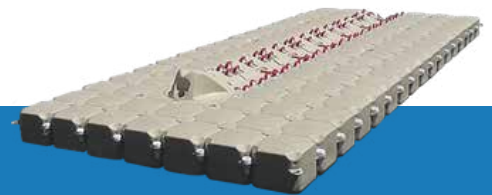
FITS ALL BOATS AND RIBS

OUR BOAT LIFT MAKES IT EASY LAUNCHING AND DRY-DOCKING OF YOUR BOAT. BUILT OF MODULAR FLOATING CUBES, IT EASILY ADAPTS TO THE WEIGHT AND SIZE OF ANY MACHINE.

Our boat lift makes it easy launching and dry-docking of your boat. It consists of **modular floating cubes 50 x 50 x 40cm** and **body parts 100 x 100 cm** equipped with horizontal and lateral rollers to receive the hull of your boat or RIB. The main advantage of a boatlift made of floating cubes is its total modularity and therefore the ability to adapt to the size and weight of your boat.



To facilitate dry-docking, we've developed a **V-shaped entry part** with a 1st roller at water level. Your boat or RIB can drive on the platform simply through **the power of engine**. At the end of the boat lift, our head part features a raised bow to avoid overshooting, but also to attach a winch if the size and weight of the boat require.



FEATURES AND BENEFITS

- Easy launching and dry-docking
- Facilitates access to boat
- No need to use antifouling (ecological and economical)
- Low maintenance
- Can easily be wintered
- Fits most boats and RIBs
- Different anchoring systems and accessories available



➡ TOTAL MODULARITY

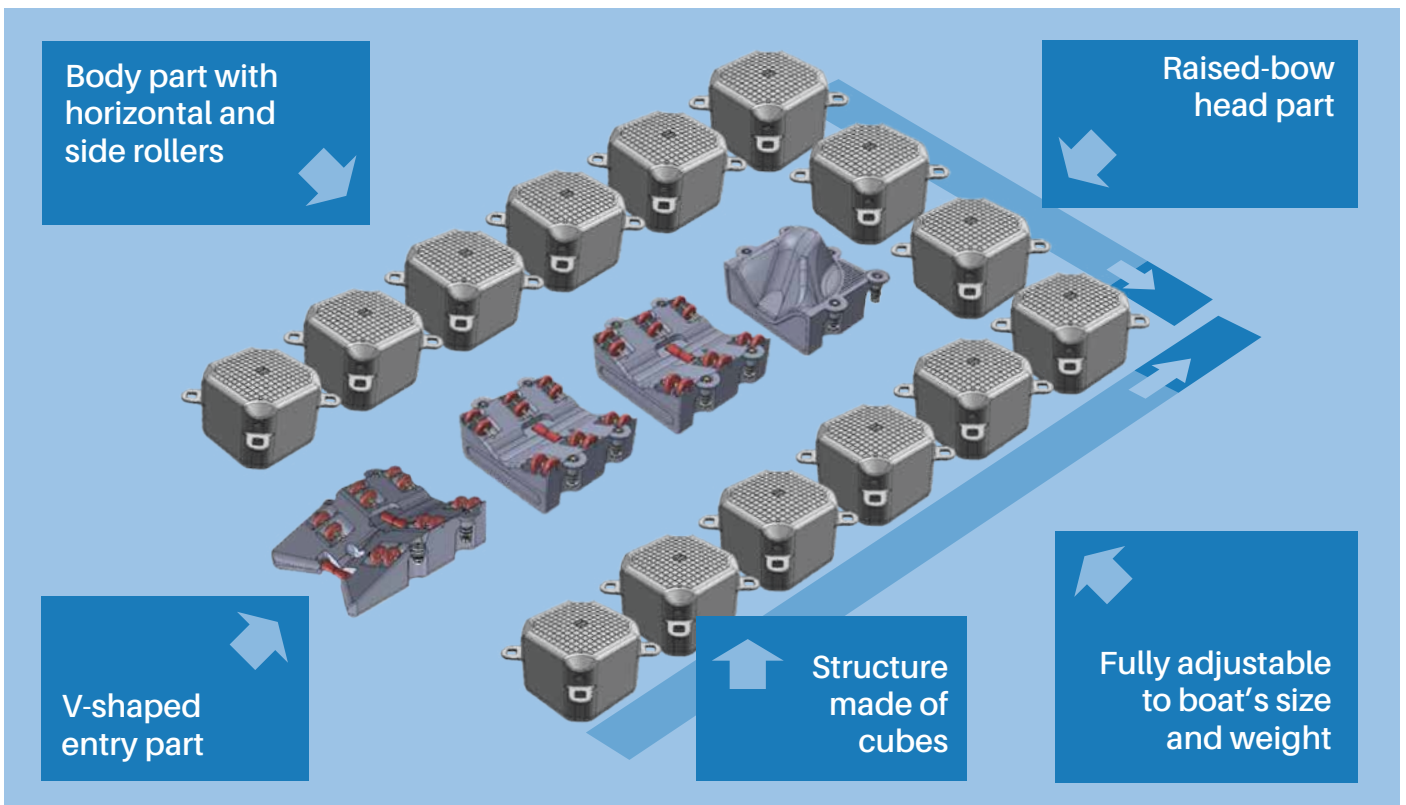
The main advantage of a Boat Lift made of floating cubes is its **total modularity** and therefore the ability to adapt to the **size** and **weight** of your boat.

➡ EASE OF ASSEMBLY

The assembly of modular floating cubes is extremely simple. Each SunnyDock cube has **4 ears on each angle** which enable assembly by the **connecting pins** tightened by means of a **locking key**.

➡ 100% CUSTOMIZABLE

The extreme simplicity of the design of the modular floating cube facilitates the adaptation of various types of **anchoring** and standard **accessories**.



A MODULAR BUT STRONG CONFIGURATION

Our boat lift consists of modular floating cubes 50 x 50 x 40cm and body parts 100 x 100cm equipped with horizontal and lateral rollers. To facilitate dry-docking, we've developed a V-shaped entry part with a 1st roller at water level. At the end of the boat lift, our head part features a raised bow to avoid overshooting, but also to attach a winch if the size and weight of the boat require.



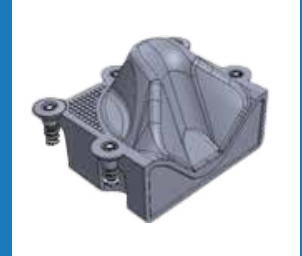
Modular floating cubes



V-shaped entry part



Body part with rollers



Head part

We offer 4 standard models: Boat Lift 5, Boat Lift 6, Boat Lift 7 and Boat Lift 8 for boats up to 5, 6, 7 or 8 m long. Each model is available in 4 versions: S stands for Standard, when I, L and U refer to the shape of each addition of extra cubes to the standard version. The concept being totally modular, any custom configuration is of course possible.



Our boat lifts allow launching and dry docking of boats and RIBs. Their structure made of floating cubes and body parts allows it to fit perfectly with all types of machines. One can easily extend the length of the lift, but also increase the buoyancy of the structure depending on the boat.

ANCHORING

Our Boat Lift can be anchored in different ways. In all cases, the type and number of anchors will be determined by the constraints of the size of the dock, the type of body of water (sea, river, lake), the environment in which it will be located (port, beach, arm of river, closed basin, etc.), the type of boat it will welcome, current and winds it will have to resist, etc. For each type of anchor, we have developed specific accessories ensuring greater efficiency.

BL-1705-EN

Anchoring system on a concrete dock



Galvanized or stainless steel brackets



Tube in L-form

Anchoring by chain or rope on mooring rings



Anchoring by rope



Mooring rings

ACCESSORIES

We provide a series of standard accessories such as mooring cleats, fenders, swim ladders that can be easily adapted to your dock.



Winch



Bumper set



Polyethylene cleat



Galvanized steel cleat



Swim ladder - polyethylene



Tube spanner



Installation tool



Connecting pin



Coupler key



Coupler set

